

Alternatives to the Circumferential Highway Chittenden County, Vermont

CIRC Alternatives Task Force
Process and Outcomes

Presentation to the
Vermont House and Senate Transportation Committees

Friday, February 6, 2015

Charlie Baker, Chittenden County Regional Planning Commission

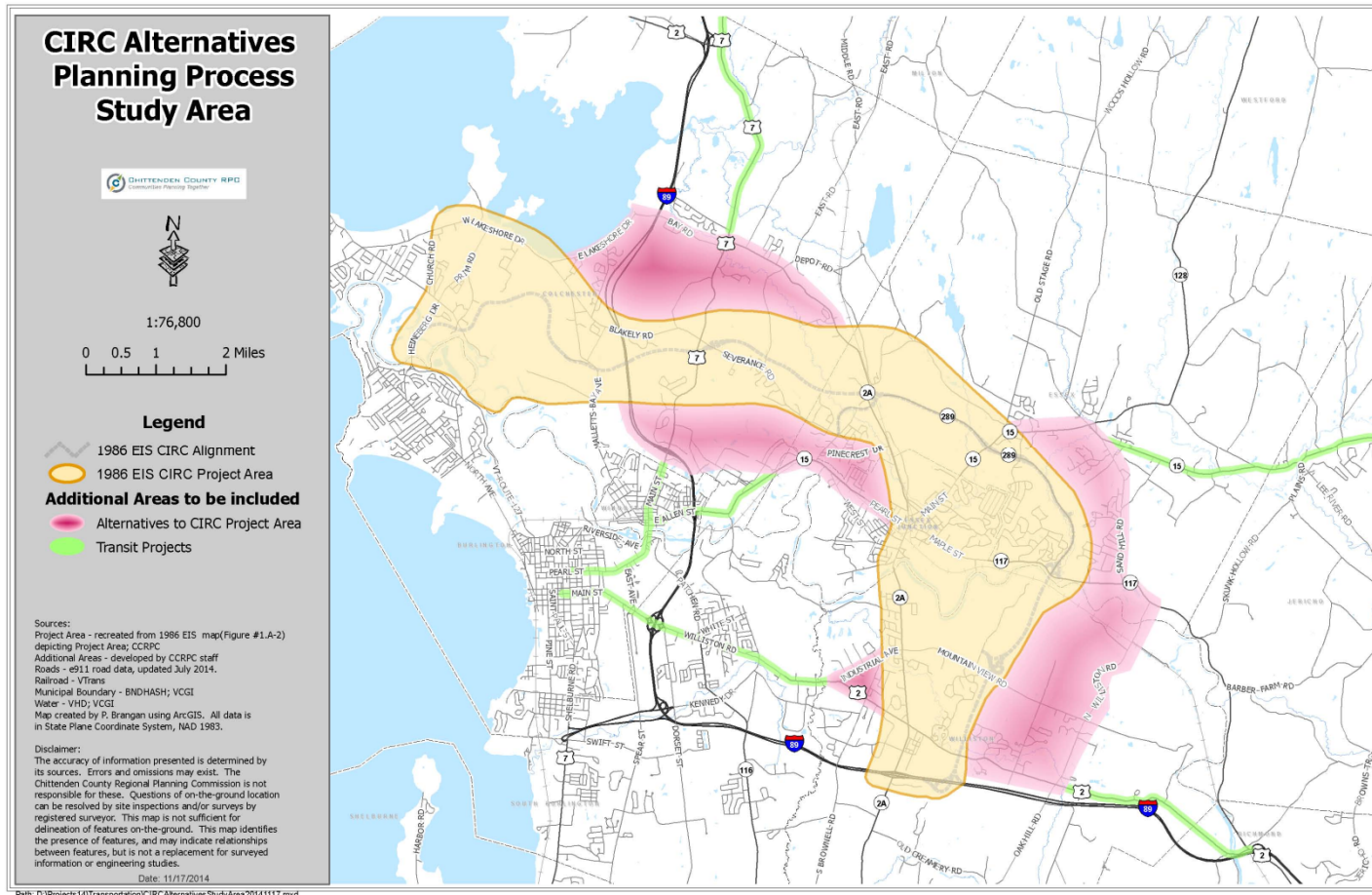
Ken Robie, VTrans Project Delivery Bureau

Agenda

- Introduction to the CIRC Alternatives: Why this is important
- The CIRC Alternatives Task Force – Process and Outcomes
- Project Status Presentation
- Questions

Introduction to the CIRC Alternatives:

- Identify projects to implement the purpose and need that the Circ highway was originally intended to address.



Background

- Expect significant growth in the next 20 years (17,000 people and 32,000 jobs).
- Per our *2013 ECOS Plan* - targeted to the 15% of our county planned for infill growth.
- Supports our economy, historic settlement patterns, and preserves our rural community character
- Balanced plan of transportation investments

The CIRC Alternatives Task Force – Process

Task Force Structure

Task Force Process

Task Force Outcomes and Regional Impact

Task Force Structure

Representation from All Constituencies in the CIRC Study Area

The “CIRC” Communities

Williston, Essex, Essex Junction, Colchester

Environmental Community

Vermont Natural Resources Council

Conservation Law Foundation

Preservation Trust of Vermont

Business Community

IBM

Greater Burlington Industrial Corporation (GBIC)

General Liaison

Regional Transportation Partners

CCTA and Local Motion (Bike/Ped Representation)

State & Federal Agencies

Agencies of Transportation, Commerce, Natural Resource

Federal Highway Administration

**Staffed by the Chittenden County Regional Planning Commission
and numerous consulting firms**

Task Force Process

1. Identification of the **Area of Impact**
2. Agreement by Task Force on **Engagement & Decision Making**
3. **Prioritization** of Projects which could move quickly for **Phase I**
4. Submission of **Phase I Project Recommendations** to the 2012 General Assembly as part of the Transportation Capital Program
5. **Prioritization** of Planning Studies to be completed for **Phase II**
6. Submission of **Phase II Project Recommendations** to the 2013 General Assembly as part of the Transportation Capital Program
7. Completion of **Williston Essex Network Transportation Study** (WENTS) to identify projects for this sub area of the CIRC Study Area
8. **Completion of Scoping projects** identified through the WENTS process and other projects prioritized in Essex and Colchester for **Phase III**
9. Submission of **Phase III Project Recommendations** to the 2014 General Assembly as part of the Transportation Capital Program

Summary of Circ Alternatives – “by the numbers”

- 7+ miles of improved roadways including enhanced roadway shoulders
- 26 intersection improvements (capacity & adaptive signal control)
- Upgrading of two Interstate 89 interchanges (Exit 16 in Colchester and Exit 12 in Williston)
- 4 new transit routes
 - commuter service along VT 15 from Jeffersonville to Burlington,
 - mid-day service from the Village of Williston to Burlington,
 - service along US Route 7 (Milton, Colchester to Burlington), and
 - potential service from Essex, thru Williston to Waterbury/Montpelier.
- Approximately 120 new park and ride spaces.
- Improved regional connectivity for walking and biking with over 42,000 feet of shared use paths and sidewalks.

Phase I Projects Added to Capital Program FY2013

Interstate 89 Exit 16 Improvements, Colchester

FY2016 Front of the Book – Safety & Traffic Operations

Construction to begin in 2016 - \$8.0M

VT 2A/VT 289 Interchange Improvements, Essex

FY2016 Front of the Book – Safety & Traffic Operations

Construction to begin in 2017 - \$1.5M

Crescent Connector, Essex Junction

FY2016 Front of the Book – Roadway

Construction to begin in 2016 - \$6.0M

VT 2A/James Brown Drive, Williston

FY2016 Front of the Book – Roadway

Construction to begin in 2017 - \$1.9M

Transportation Demand Management (TDM)/Transportation Systems Management (TSM), Regional (Transit, TDM/TSM)

Programmed

Phase II Projects Added to Capital Program FY2014

Severance Corners Improvements, Colchester

FY2016 D&E – Safety & Traffic Operations

Construction anticipated in 2020 - \$4.5M

VT15 Multi-Use Path, Winooski, Colchester, Essex, and Essex Junction

FY2016 Front of the Book – Bike & Pedestrian Facilities

Construction to begin in 2018 - \$1.1M

VT15/Sand Hill Road Intersection, Essex

FY2016 Front of the Book – Safety & Traffic Operations

Construction to begin in 2019 - \$1.0M

VT15 Improvements – Post Office Square to 5-Corners, Essex Junction

FY2016 Front of the Book – Roadway

Construction to begin in 2018 - \$1.8M

US2/Trader Lane Traffic Signal, Williston

FY2016 Front of the Book – Safety & Traffic Operations

Construction to begin in 2017 - \$1.2M

Adaptive Signal Control, Go! Chittenden County Program Expansion, CCTA Commuter Service – Programmed

Phase III Projects Added to Capital Program FY2015

WILLISTON

- **I-89 Exit 12 Interchange Improvements, Williston**
 - New southbound VT2A auxiliary lane; Signal Optimization; New shared-use path from Police Barracks to Hurricane Lane
 - New Grid Streets and At-Grade Intersection on VT2A between I-89 and Marshall Avenue
 - Diverging Diamond Interchange and related improvements
 - VT2A Boulevard Upgrade from Grid Street Intersection to Taft Corners
FY2016 D&E – Roadway – \$45.6M
- **Industrial Ave/Mountain/VT2A View Rd Intersection Improvements and Additional Lane on VT2A to James Brown Drive, Williston**
FY2016 D&E – Safety & Traffic Operations - \$5.3M
- **New US 2 Taft Corners to Williston Village Shared Use Pathway – North side Alignment, Crossing, Village Sidewalk, Williston**
FY2016 Candidate – Bike & Pedestrian Facilities - \$2.8M
- **New Mountain View Road and Redmond Road Shoulders, Williston**
FY2016 Candidate – Roadway - \$3.5M
- **New VT2A Taft Corners Area Sidewalks/Shared Use Paths, Williston**
FY2016 Candidate – Bike & Pedestrian Facilities - \$650k

Phase III Projects Added to Capital Program FY2015

ESSEX

- **VT117/North Williston Road Intersection Improvements, Essex**
FY2016 D&E – Safety & Traffic Operations - \$1.6M
- **VT117/North Williston Road Hazard Mitigation Improvements - 6' Box Culvert, Safety Enhancements & Armoring, Essex**
FY2016 Candidate – Roadway - \$670k
- **New VT15 Old Stage Road to Essex Way Sidewalk, Essex**
FY2016 Candidate – Bike & Pedestrian Facilities - \$160k
- **VT15/Susie Wilson Road/Kellogg Road Corridor and Intersection Improvements, Essex**
FY2016 D&E – Roadway - \$8.5M

Phase III Projects Added to Capital Program FY2015

COLCHESTER

- **VT2A Colchester Village Main Street and Mill Pond Road/East Road Intersection Improvements, Colchester**
FY2016 D&E – Roadway - \$3.9M
- **VT127 Blakely Road/Laker Lane Intersection Improvement, Colchester**
FY2016 D&E – Safety & Traffic Operations - \$360k
- **VT127 Prim Road/West Lakeshore Drive Intersection Improvement, Colchester**
FY2016 D&E – Roadway - \$1.7M
- **Mill Pond Road/Severance Road Intersection Improvements and New Shared Use Path - South Side Alignment, Colchester**
FY2016 Candidate – Bike & Pedestrian Facilities - \$2.4M
- **New CCTA Commuter Service: Milton/Colchester to Burlington - \$70k**

Phase III Projects Added to Capital Program FY2015

CCTA Commuter Service

- **Milton/Colchester to Burlington Commuter Service**
Programmed - \$70k
- **Essex/Williston to Waterbury/Montpelier Commuter Service and Park & Rides**
Programmed - \$1.5M